



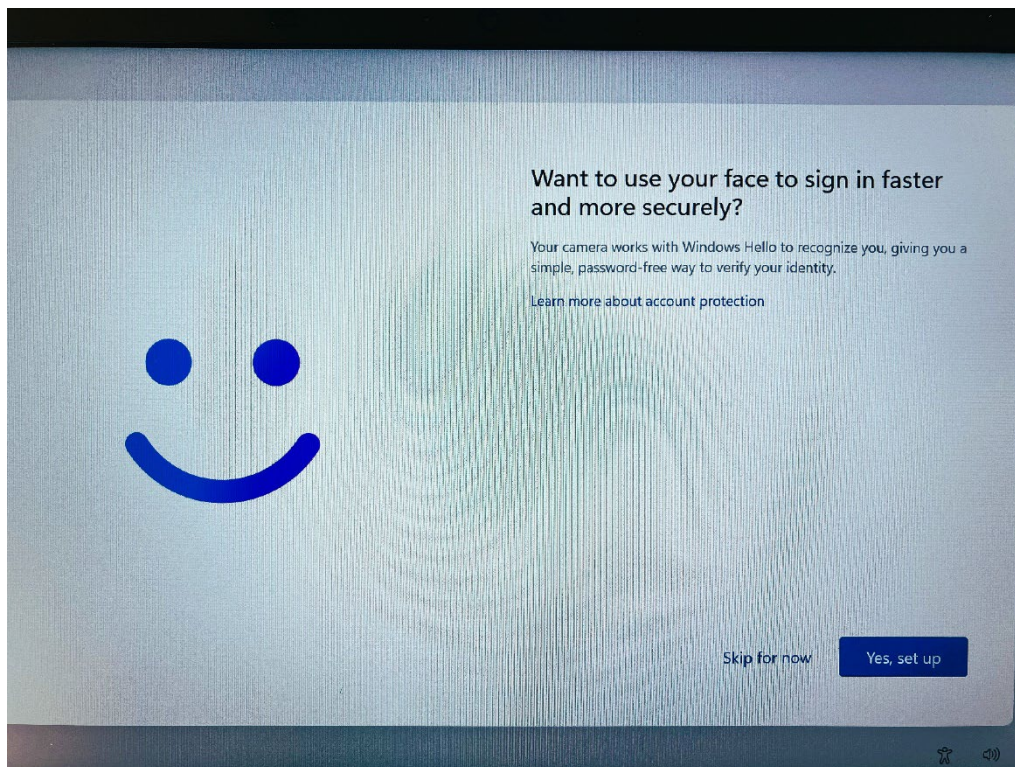
JÖNKÖPING UNIVERSITY



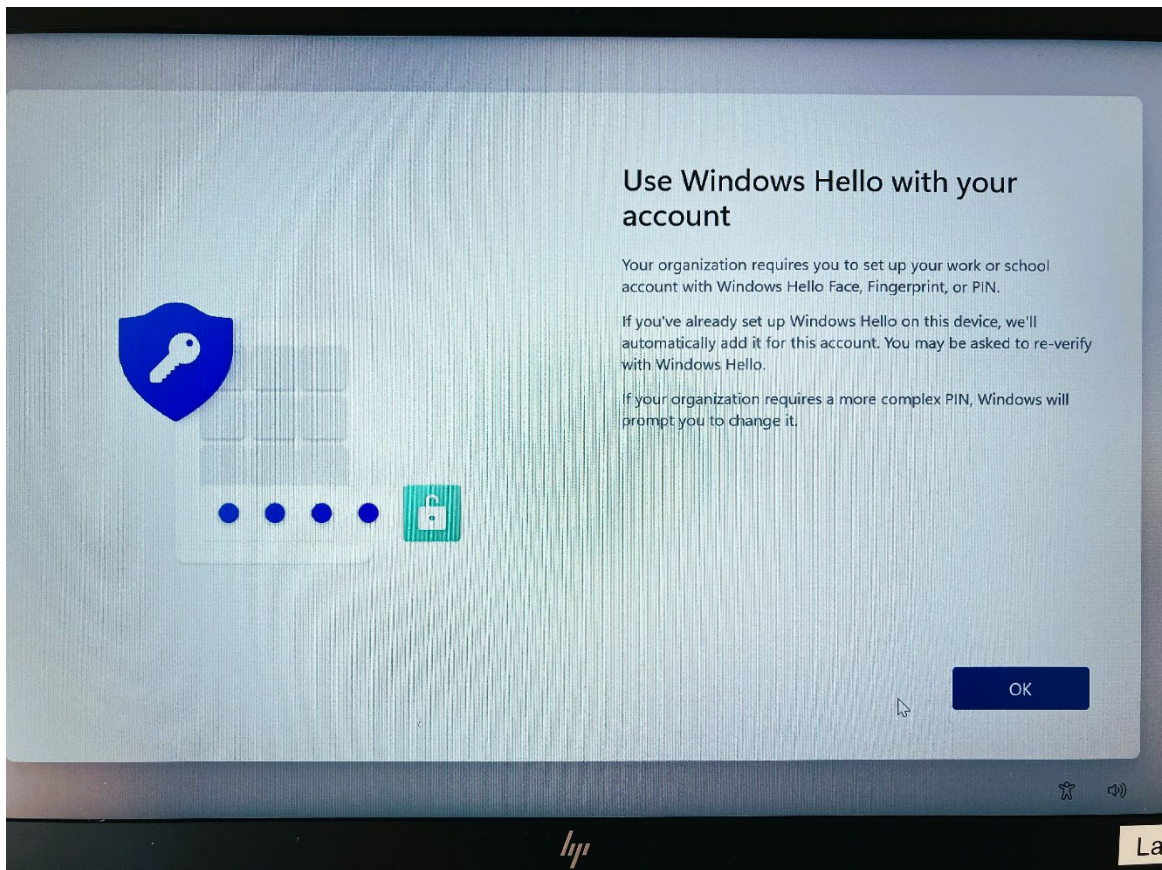
Configure MFA with Windows Hello

The first time you log in to a new computer, you need to confirm your login with MFA. Here's a guide if you haven't set up MFA before.

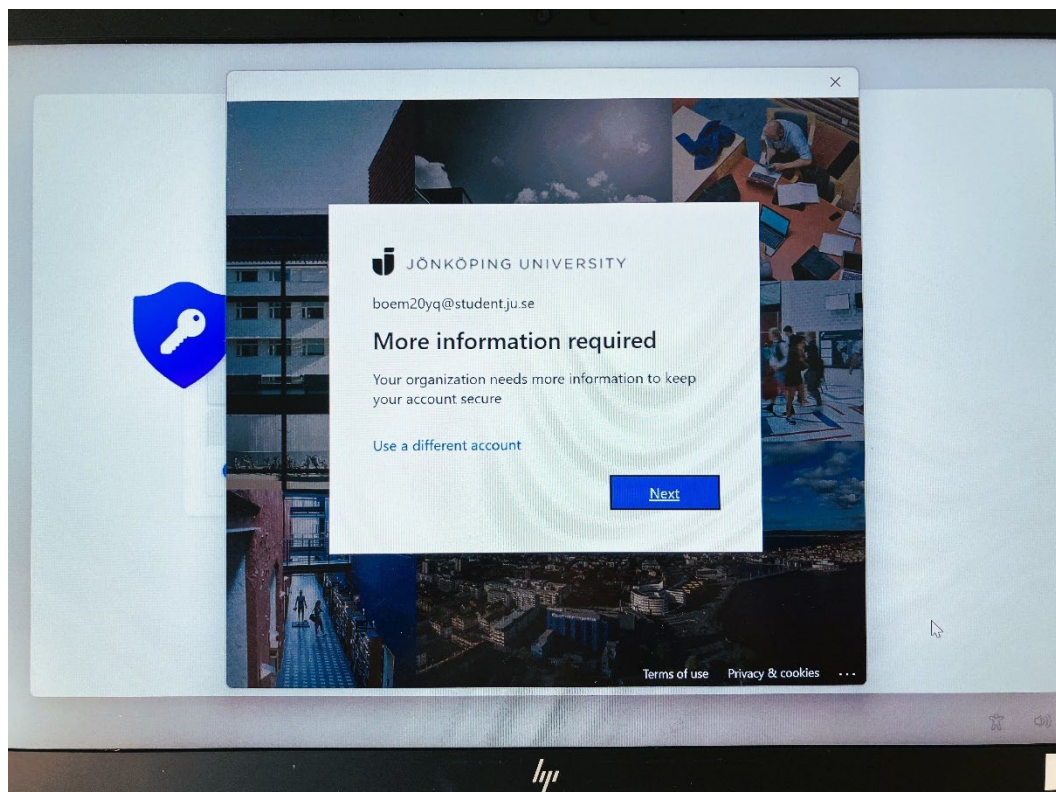
- Follow the steps to log in with your JU account on your computer
- Here you can choose to use facial recognition to log in to your computer. (This is not a requirement)



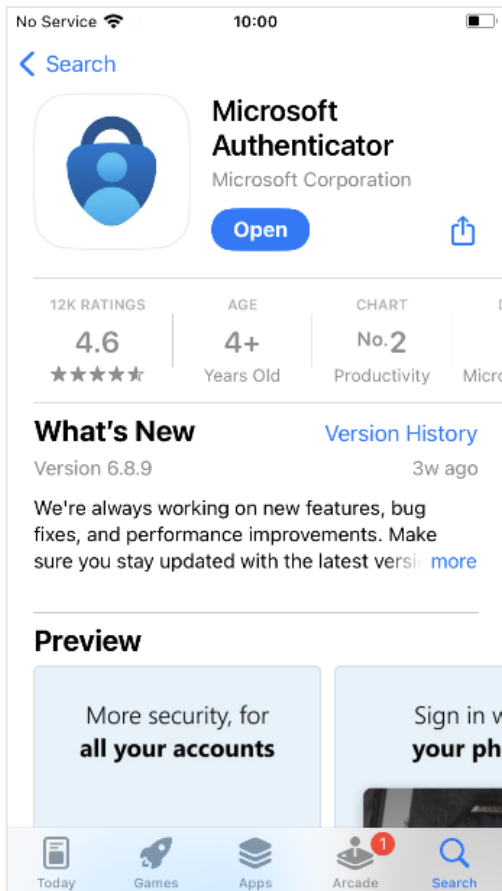
- Click OK



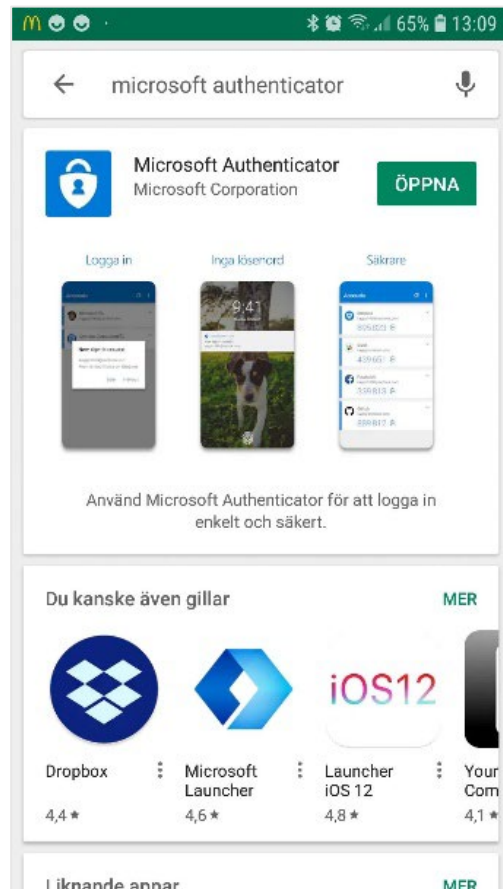
- Now it's time to set up MFA using your **Microsoft Authenticator** app Click Next



- Before you continue, you need to download the **Microsoft Authenticator** app on your phone. Install from the **AppStore** on an Apple device or from **Google Play** on an Android device.

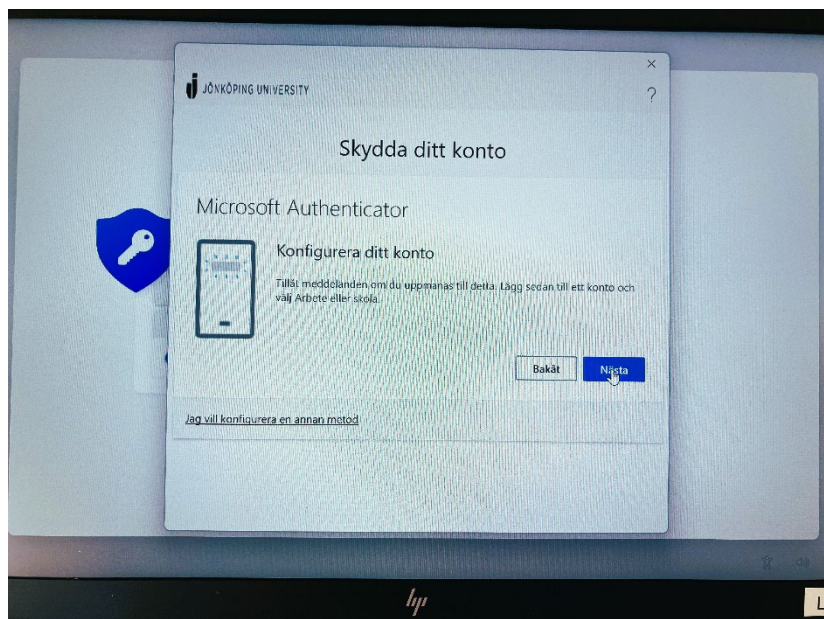


iOS

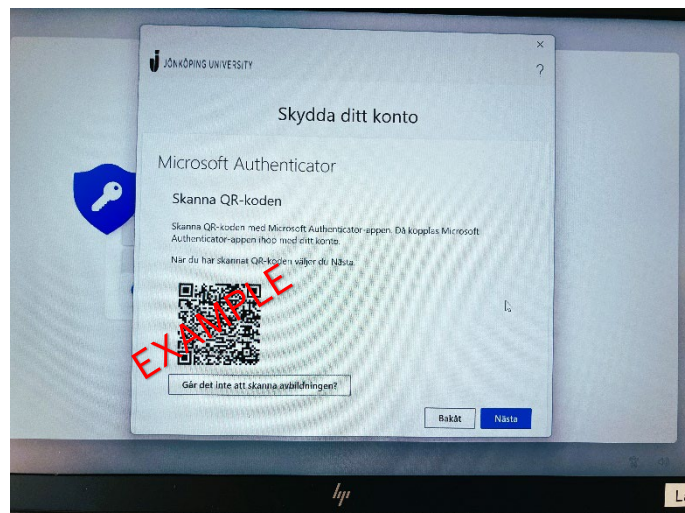
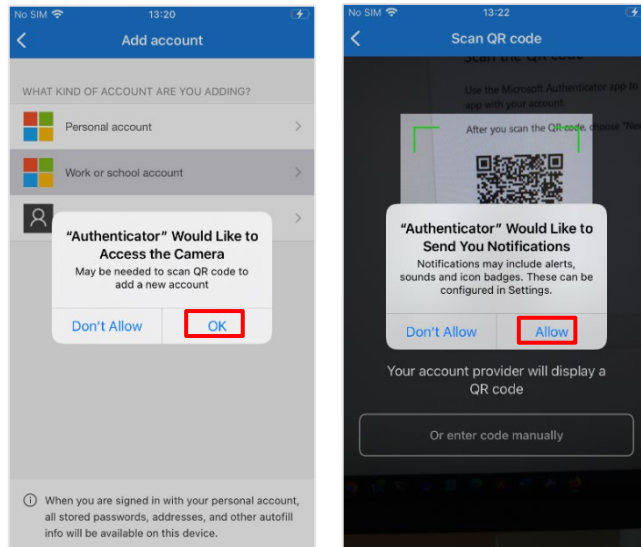
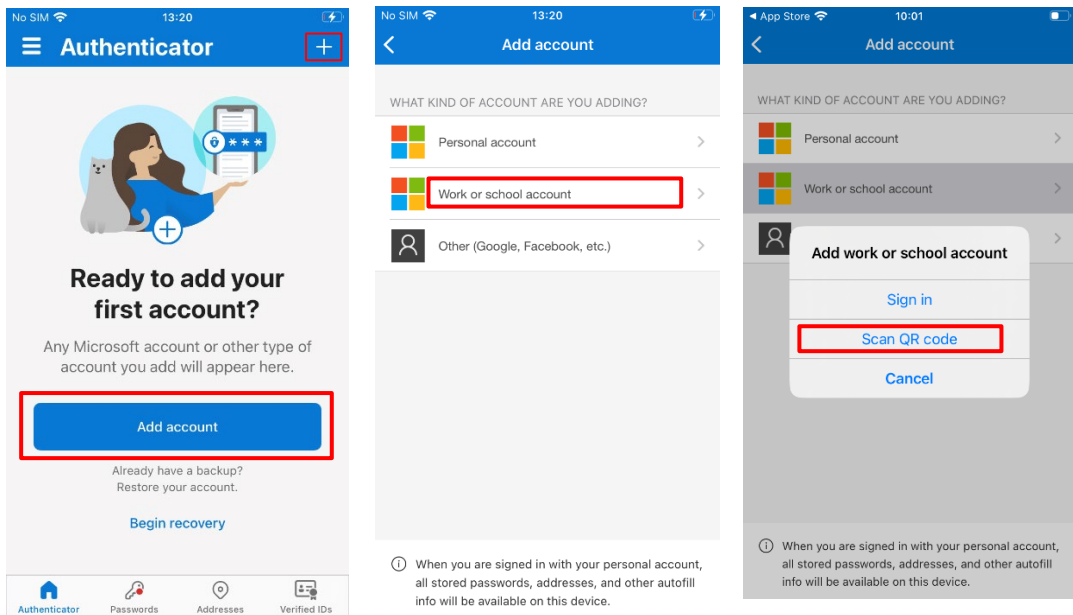


Android

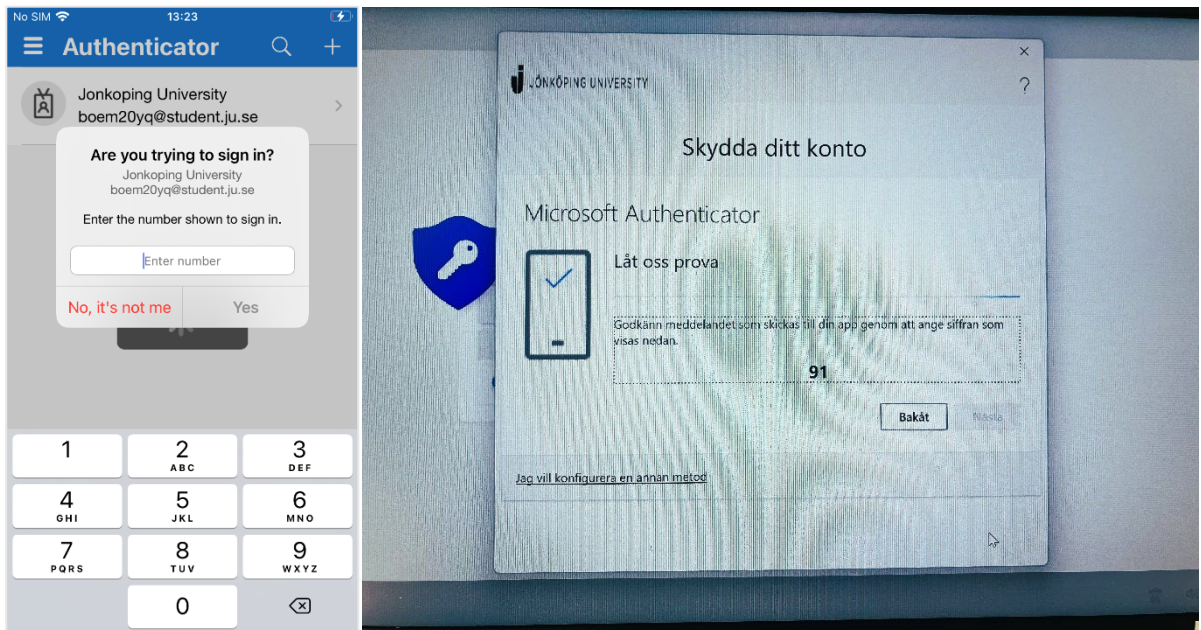
- Once the app is installed on the phone you want to use for the sign-in, select **Next** followed by **Next** again on the "Set up your account" dialog box.



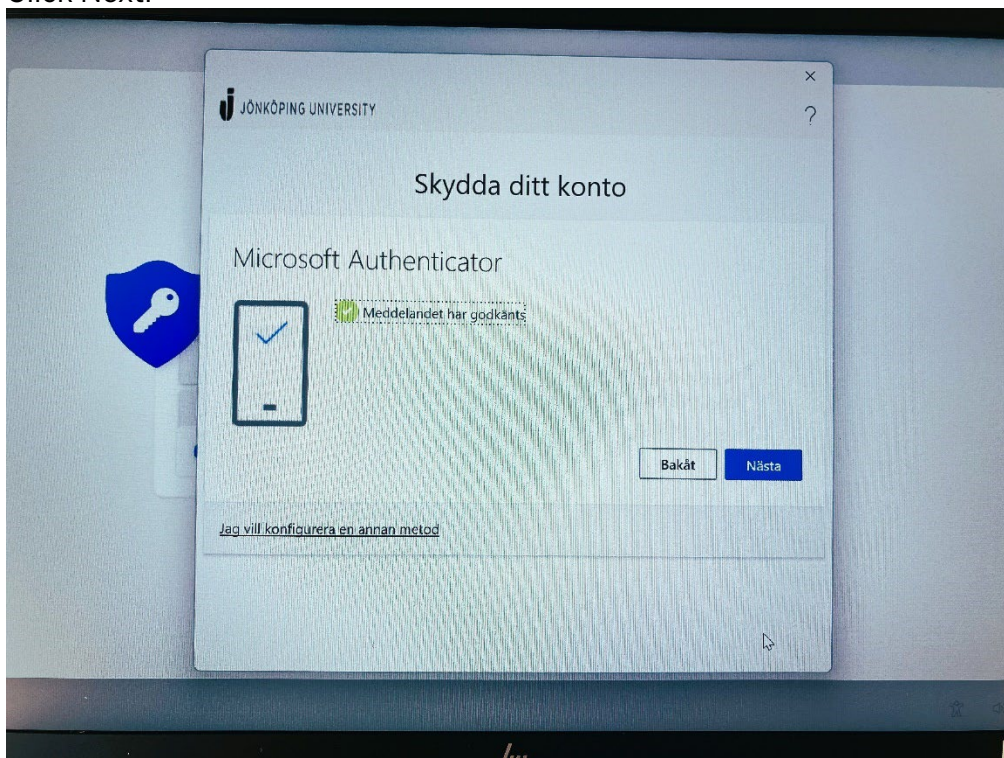
- Open **Microsoft Authenticator** on mobile. Select **Add account** (or click the **ad-sign**) followed by **Work or school account**. Scan the QR code that appears on the screen. *(Don't forget to allow Notifications on your phone if desired)*



- When the QR code is scanned, the account should appear in Microsoft Authenticator as shown below. Select **Next** on the screen to test the confirmation. Enter the number into the Authenticator app that appears on the screen.



- Click Next.



- Now everything should be Ready and you can continue the PIN setup and later login to Windows.